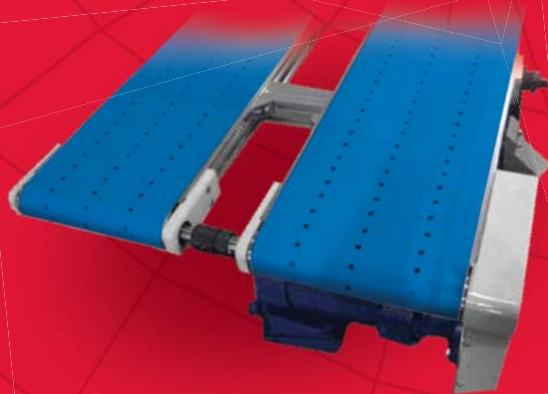




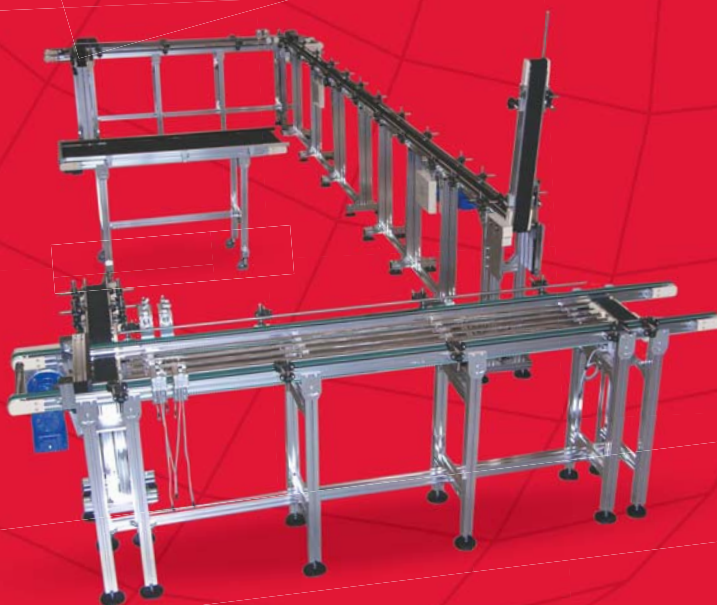
Automation
Robohand FERGUSON
CAMCO



STANDARD CONVEYORS



SPECIALTY CONVEYORS



MODULAR CONVEYOR SYSTEMS

MODULAR CONVEYORS & SYSTEMS

September 2009

www.destaco.com

Precisely positioning our customers for productivity.

CAD FILES
AVAILABLE
ONLINE



DE-STA-CO OVERVIEW

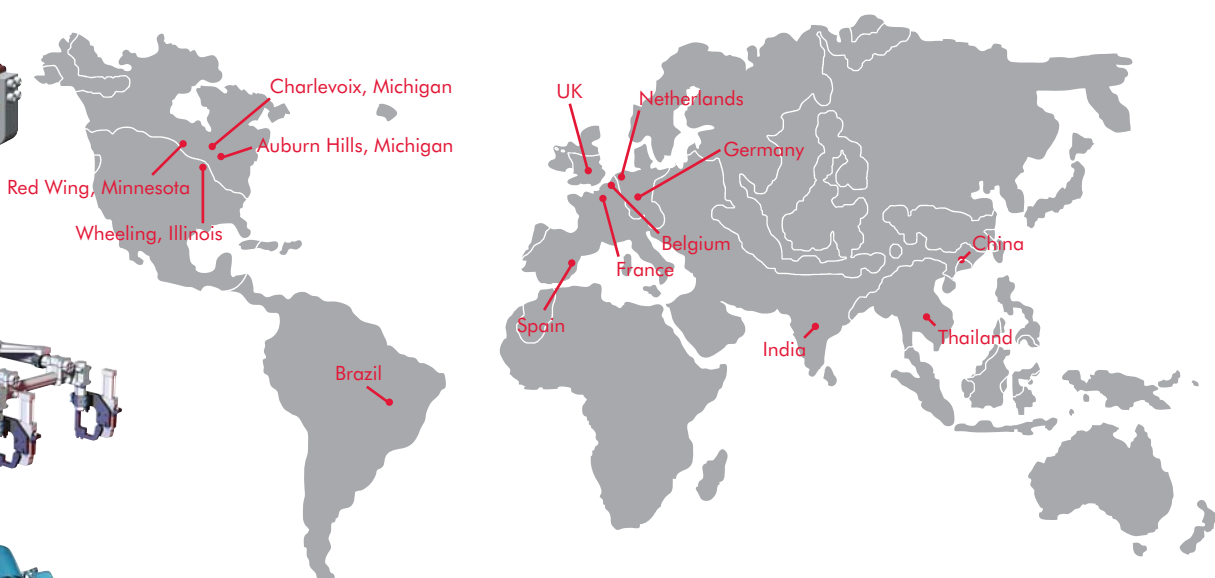


A DUKED COMPANY

Automation
Robohand FERGUSON
CAMCO

THE BEST PRODUCTS. UNMATCHED SERVICE. WORLDWIDE.

With a support network spanning the globe, DE-STA-CO offers consistent, comprehensive service to any location in the world. Whether your operations are localized or span multiple continents, you will always have access to the highest levels of customer service and technical support.



TEAM DE-STA-CO

Team DE-STA-CO represents our efforts to provide consistent, standard-setting service and products to every DE-STA-CO customer, regardless of geographic location. Through this commitment, we are able to draw on our extensive knowledge base to always provide the perfect solution specific to your unique applications. This progressive global approach to doing business provides a level of expertise that is unmatched in the industry.





ROBERTSON COMPANY

Automation
Robbhead FERROUSON
CAMCO

TABLE OF CONTENTS



FLAT BELTS

48 SERIES LOW PROFILE

Direct Drive	4
Offset Drive	5
Side Mount Head Drive	6
Center Drive	7

74 SERIES MEDIUM DUTY

Direct Drive	8
Offset Drive	9
Center Drive	10
Flat Belts	11

MODULAR PLASTIC BELTS

48 series Low Profile	12
74 Series Medium Duty	13
Plastic Belts	14

TIMING BELTS

Offset Head Drive Belts	15
Timing Belts	16

ROLLER CHAIN

Offset Head Drive Roller Chain	17
Attachment Roller Chains	18
Two-Piece Plastic Chains	19
Two-Piece Steel Chains	20

SPECIALTY CONVEYORS 21

TRAY HANDLING SYSTEMS 22

CONTROLLERS 24

CONVEYOR SIDE RAILS 25

CONVEYOR STANDS 26

CONVEYOR ACCESSORIES 27

MODIFIED STANDARDS 28

APPLICATION REQUEST FORM 30

FLAT BELTS

48 Series Low Profile



A BODDED COMPANY

Automation
Robohand FERGUSON
CAMCO

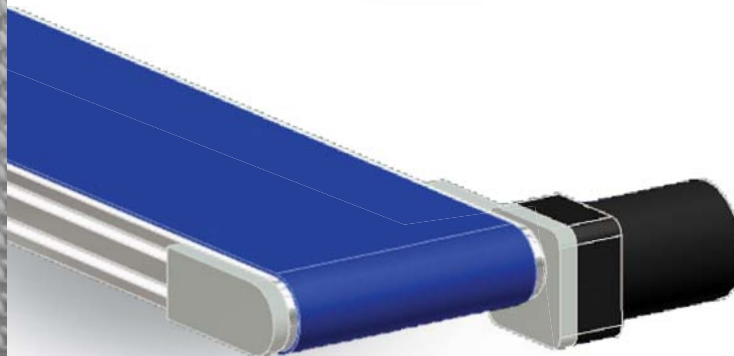
Direct Drive

- Compact design gets the traditional drive train out of the way
- Right Hand or Left Hand Drive
- In-feed 19mm Transfer Nose available

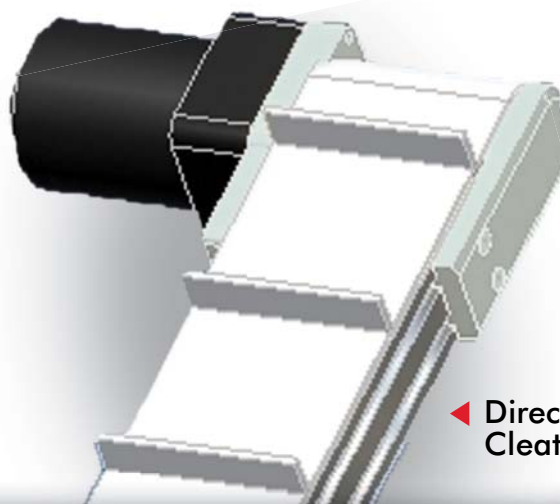
Frame height (mm)	51mm
Frame height (in)	2"
Speed	0-100 fpm
Width (mm)	48-400mm
Width (in)	1.8"-15.7"
Length (mm)	304-3657mm
Length (in)	1-12 ft
Variable Speed	YES
Fixed Speed	YES
Conveying Weight	up to 22.7Kg up to 50 lbs.
Voltages	115/1/60 230/1/60 230/3/60
Cleats (mm)	6-67mm
Cleats (in)	0.236"-03"
Accumulation	YES



◀ Direct Drive



◀ Direct Drive Flat Belt



◀ Direct Drive Cleated Belt



ROBECOM COMPANY

Automation
Robehead FERROUS
CAMCO

FLAT BELTS

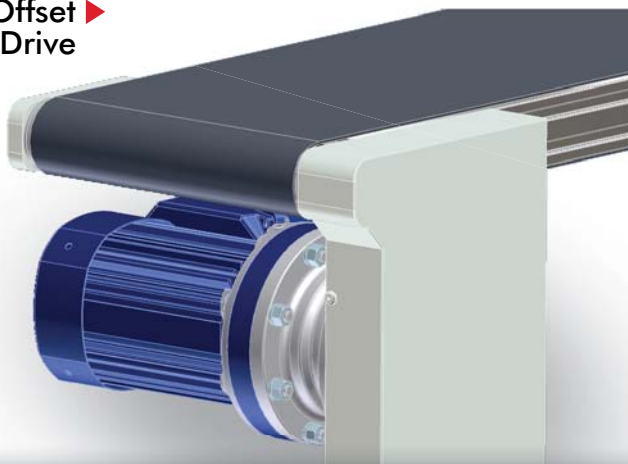
48 Series Low Profile



Offset ▶
Head Drive



Offset ▶
Head Drive



Offset ▶
Head Drive

Offset Head Drive

- Moves the Motor back past the Pulley Centerline for In-feed to Automated Stations
- Chain and Sprocket Drive for Long Life
- Left Hand and Right Hand Versions
- Motor tucked under Conveyor for Width Restrictive Applications
- In-feed 19mm Transfer Nose available

Frame height (mm)	51mm
Frame height (in)	2"
Speed	0-200 fpm
Width (mm)	48-800mm
Width (in)	1.8"-31.4"
Length (mm)	304-4572mm
Length (in)	1-15 ft
Variable Speed	YES
Fixed Speed	YES
Conveying Weight	up to 68Kg up to 150 lbs.
Voltages	115/1/60 230/1/60 230/3/60 460/3/60 575/3/60
Cleats (mm)	6-20mm
Cleats (in)	0.236"-0.750"
Accumulation	YES

FLAT BELTS

48 Series Low Profile



A DODGE COMPANY

Automation
Robohand FERGUSON
CAMCO

Side Mount Head Drive

- Moves the Motor back and out past the Pulley Centerline for In-feed to Automated Stations
- Chain and Sprocket Drive for Long Life
- Left Hand and Right Hand Versions
- Motor moves Back and Out-bound for Cleated Belt applications
- In-feed 19mm Transfer Nose available

Frame height (mm)	51mm
Frame height (in)	2"
Speed	0-200 fpm
Motor Position	Up or Down
Width (mm)	48-800mm
Width (in)	1.8"-31.4"
Length (mm)	304-4572mm
Length (in)	1-15ft
Variable Speed	YES
Fixed Speed	YES
Conveying Weight	up to 68Kg up to 150 lbs.
Voltages	115/1/60 230/1/60 230/3/60 460/3/60 575/3/60
Cleats (mm)	6-67mm
Cleats (in)	0.236"-03"
Accumulation	YES



▼ Side Mount Up



▼ Side Mount Down



A BOWEN COMPANY

Automation
Robbhead FERROUSON
CAMCO

FLAT BELTS

48 Series Low Profile

Center Drive ▼



19mm Transfer Nose ▼



Center Drive

- Leaves Entrance and Exit of Conveyor Unobstructed. Drive can be moved Upstream or Downstream as Required
- Higher Load Capacities and Longer Lengths
- 19mm Transfer Nose possible for both In-feed and Out-feed

Frame height (mm)	51mm
Frame height (in)	2"
Speed	0-400 fpm
Width (mm)	48-800mm
Width (in)	1.8"-31.4"
Length (mm)	609-12,192mm
Length (in)	2-40 ft
Variable Speed	YES
Fixed Speed	YES
Conveying Weight	up to 91Kg up to 200 lbs.
Voltages	115/1/60 230/1/60 230/3/60 460/3/60 575/3/60
Accumulation	YES

FLAT BELTS

74 Series Medium Duty



A DIVISION OF

Automation
Robbend FERGUSON
CAMCO

Direct Drive

- Compact design gets the traditional drive train out of the way
- Right Hand or Left Hand Drive
- In-feed 19mm Transfer Nose available

Frame height (mm)	74mm
Frame height (in)	3"
Speed	0-100 fpm
Width (mm)	48-400mm
Width (in)	1.8"-15.7"
Length (mm)	304-4572mm
Length (in)	1-15 ft
Variable Speed	YES
Fixed Speed	YES
Conveying Weight	up to 204Kg up to 450 lbs.
Voltages	115/1/60 230/1/60 230/3/60 460/3/60 575/3/60
Cleats (mm)	6-67mm
Cleats (in)	0.236"-03"
Accumulation	YES



74 Series Medium Duty Direct Drive



DOVER COMPANY

Automation
Robbeind FERROUSON
CAMCO

FLAT BELTS

74 Series Medium Duty

74 Series Medium Duty Offset Head Drive ▼



Offset Head Drive

- Moves the Motor back past the Pulley Centerline for In-feed to Automated Stations
- Chain and Sprocket Drive for Long Life
- Left Hand and Right Hand Versions
- Motor tucked under Conveyor for Width Restrictive Applications
- In-feed 19mm Transfer Nose available

Frame height (mm)	74mm
Frame height (in)	3"
Speed	0-200 fpm
Width (mm)	48-800mm
Width (in)	1.8"-31.4"
Length (mm)	304-4572mm
Length (in)	1-15 ft
Variable Speed	YES
Fixed Speed	YES
Conveying Weight	up to 204Kg up to 450 lbs.
Voltages	115/1/60 230/1/60 230/3/60 460/3/60 575/3/60
Cleats (mm)	6-20mm
Cleats (in)	0.236"-0.750"
Accumulation	YES

FLAT BELTS

74 Series Medium Duty



A DOVER COMPANY

Automation
Robohand FERGUSON
CAMCO

Center Drive

- Leaves Entrance and Exit of Conveyor Unobstructed. Drive can be moved Upstream or Downstream as Required
- Higher Load Capacities and Longer Lengths
- 19mm Transfer Nose possible for both In-feed and Out-feed

Frame height (mm)	74mm
Frame height (in)	3"
Speed	0-400 fpm
Width (mm)	48-800mm
Width (in)	1.8"-31.4"
Length (mm)	609-12,192mm
Length (in)	2-40 ft
Variable Speed	YES
Fixed Speed	YES
Conveying Weight	up to 272Kg up to 600 lbs.
Voltages	115/1/60 230/1/60 230/3/60 460/3/60 575/3/60
Accumulation	YES

▼ 74 Series Medium Duty Direct Drive



DESTACO

A DOVER COMPANY



BOYD COMPANY

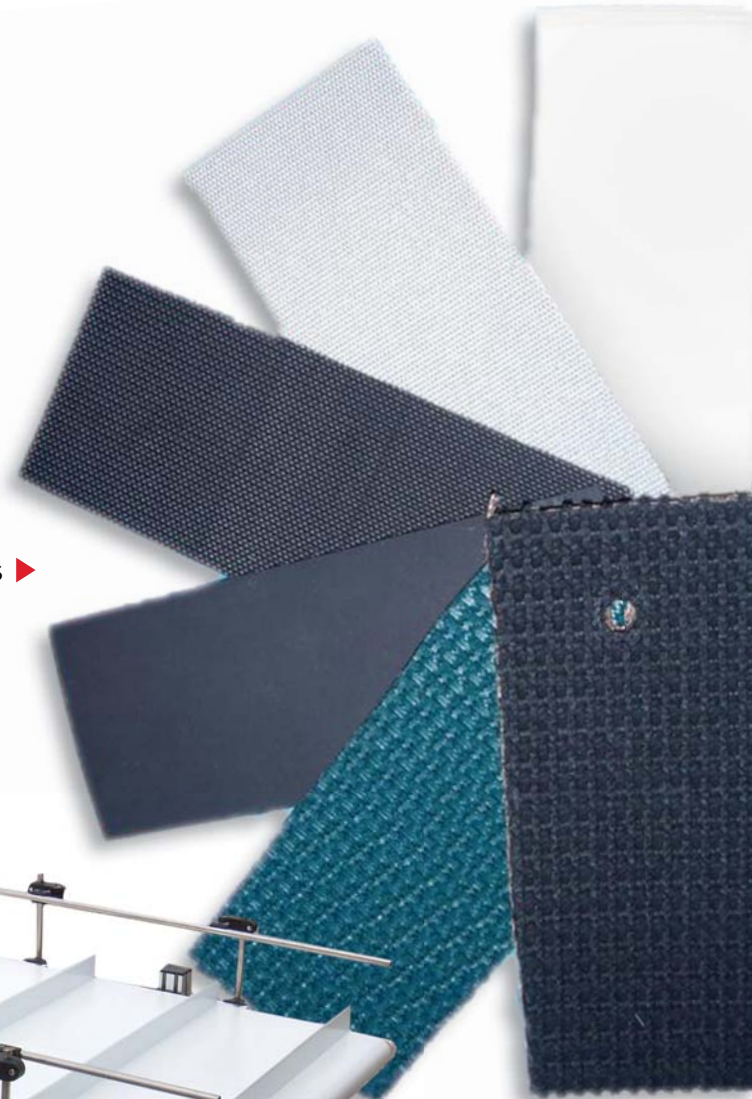
Automation
Robbehead FERROUS
CAMCO

FLAT BELTS

Conveyor Belts

Common Belt Materials

- Common Materials: Urethanes, PVC, Silicone and Nylon
- Belting Options: Cleated, "V" Guided, Side Walls and High Friction Rough Tops
- Welded Seamless or Plastic Mechanical Splice available



Common Belt Materials ▶



◀ Cleated Belt

MODULAR PLASTIC BELTS

48 Series Low Profile



A DODGE COMPANY

Automation
Robohand FERGUSON
CAMCO

Modular Plastic Belt

- Sprocket Driven for Positive Belt Engagement
- Higher Load Capacities and Longer Lengths
- 22mm Transfer Nose available
- Wide variety of Belt Compositions and Styles
- Modular Construction for Simple Belt Change
- Conveyor Length Stationary for Fixed Point Applications

Frame height (mm)	51mm
Frame height (in)	2"
Speed	0-300 fpm
Width (mm)	100-1219mm
Width (in)	4"-48"
Length (mm)	457-12,192mm
Length (in)	1.5-40 ft
Variable Speed	YES
Conveying Weight	up to 272Kg up to 600 lbs.
Voltages	115/1/60 230/1/60 230/3/60 460/3/60 575/3/60
Cleats	YES
Accumulation	YES



▲
48 Series
Modular
Plastic Belt
Drive



▼
Plastic Belt
Transfer

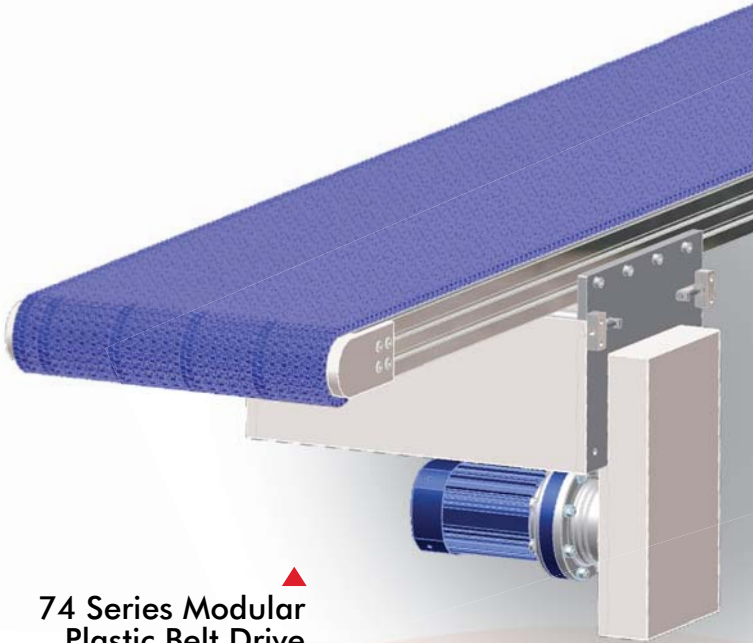


DOVER COMPANY

Automation
Robbeand FERROUSON
CAMCO

MODULAR PLASTIC BELTS

74 Series Medium Duty



74 Series Modular Plastic Belt Drive

Modular Plastic Belts

- Sprocket Driven for Positive Belt Engagement
- Higher Load Capacities and Longer Lengths
- 22mm Transfer Nose available
- Wide variety of Belt Compositions and Styles
- Modular Construction for Simple Belt Change
- Conveyor Length Stationary for Fixed Point Applications

Frame height (mm)	74mm
Frame height (in)	3"
Speed	0-300 fpm
Width (mm)	100-1219mm
Width (in)	4"-48"
Length (mm)	457-12,192mm
Length (in)	1.5-40 ft
Variable Speed	YES
Conveying Weight	up to 454Kg up to 1,000 lbs.
Voltages	115/1/60 230/1/60 230/3/60 460/3/60 575/3/60
Cleats	YES
Accumulation	YES

MODULAR PLASTIC BELTS

Conveyor Belts



A DUKED COMPANY

Automation
Robbend FERGUSON
CAMCO

Conveyor Belts

- Common Materials: Polypro, Polyethelene and Acetyl
- Belting Options: Cleated, Side Walls and High Friction Rough Tops
- Mechanical Rod Connections for Standard and High Abrasion Application

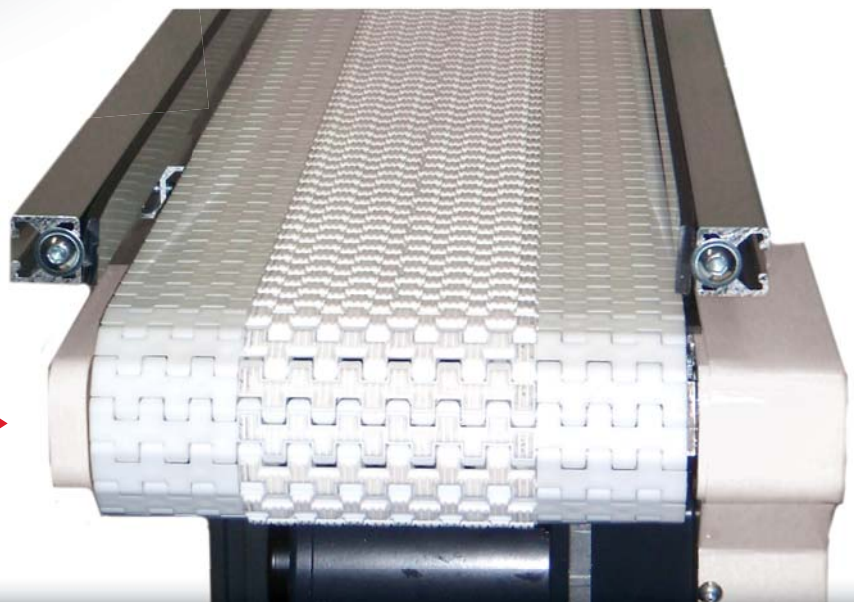


▲
22mm Transfer Nose

22mm Transfer Nose

- 22 mm Transfer Nose
- Optional on Flat Belts and Modular Plastic Chain Conveyors

High Friction Belt ►





A BOWEN COMPANY

Automation
Robohand FERROUS
CAMCO

TIMING BELTS

Offset Head Drive Belts



T5 Twin Belt ▶

Over/Under Twin Belt ▼



Timing Belts- Offset Head Drive

- Sprocket Driven for Positive Belt Engagement
- Higher Load Capacities and Longer Lengths
- Wide variety of Belt Compositions and Styles
- Modular Construction for Simple Belt Change
- Molded or Bolt on Fixture Attachments Available

Frame height (mm)	51mm
Frame height (in)	2"
Speed	0-400 fpm
Width (mm)	
Single Strand	48, 125, 175mm
Multiple Strand	3000mm
Width (in)	
Single Strand	1.8," 4.9," 6.8"
Multiple Strand	118"
Length (mm)	457-12,192mm
Length (in)	1.5-40 ft
Variable Speed	YES
Voltages	115/1/60 230/1/60 230/3/60 460/3/60 575/3/60
Accumulation	POSSIBLE
Attachments	YES

TIMING BELTS



A DIVISION COMPANY

Automation
Robohand FERGUSON
CAMCO

Timing Belts

- Our Standard Pitch is T5 and AT10
- Widths range from 10mm to 300mm wide
- Standard Reinforcing is Steel with Kevlar as an Option
- All Belts are Welded Endless
- Fixtures and Fixture Ready Belts available





ROBERTSON COMPANY

Automation
Robbeind FERROUSON
CAMCO

Roller Chain

Offset Head Drive Roller Chain



▲
Duplex #40
Standard &
Attachment

▼
Roller Chain



Roller Chain- Offset Head Drive

- Designed for Accumulation of Difficult Metal Parts
- Ideal for Metal Cutting Environments
- Cost-effective replacement for In-line Vibratory Tracks
- Sprocket Driven for Positive Chain Engagement

Speed 0-400 fpm

Width (mm)
 Single Strand 48, 125, 175mm
 Multiple Strand 3000mm

Width (in)
 Single Strand 1.8", 4.9", 6.8"
 Multiple Strand 118"

Length (mm) 457-12,192mm
Length (in) 1.5-40 ft

Variable Speed YES

Voltages 115/1/60
 230/1/60
 230/3/60
 460/3/60
 575/3/60

Accumulation YES

Attachments YES

ATTACHMENT ROLLER CHAINS



A DIVISION COMPANY

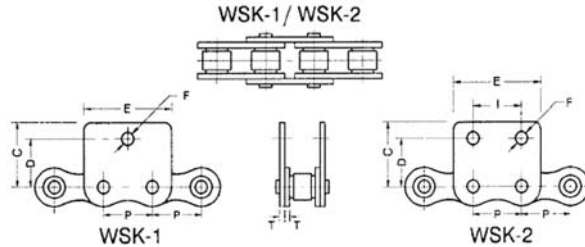
Automation
Robohand FERGUSON
CAMCO

Attachment Roller Chains

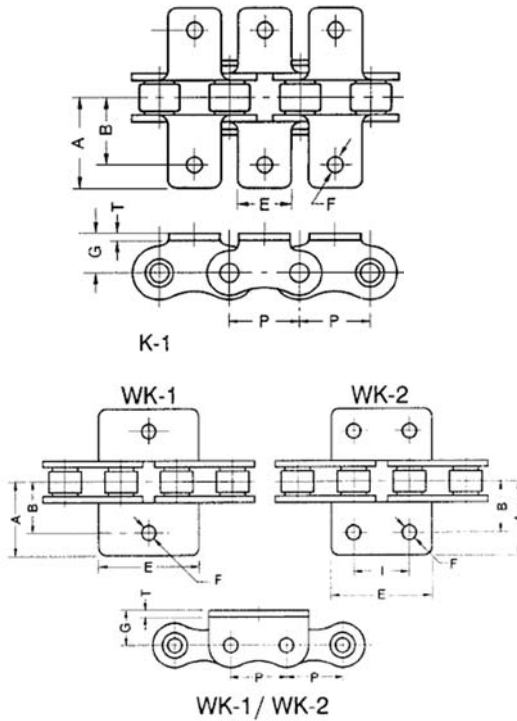
- Sprocket Driven Roller Chain with a Variety of Attachments
- Width and Length Selectable
- Accumulating or Indexing Per Application
- Designed around Customer's Parts or Carriers



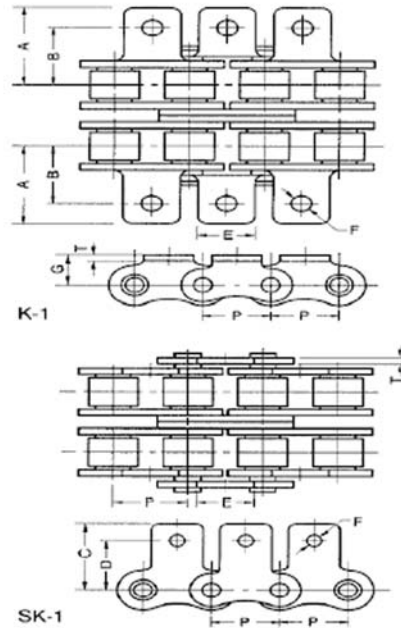
◀ Attachment Roller Chain



Straight One Hole or Two Hole Attachments



Bent One Hole or Two Hole Attachments



Duplex Chain Attachments



ROBERTSON COMPANY

Automation
Robbhead FERROUS
CAMCO

TWO-PIECE PLASTIC CHAINS



Quad Lane ▶
3.25" Low Friction



Twin Lane ▼
4.5" Acetal

Two-Piece Plastic Chain-Offset Head Drive

- Sprocket Driven Roller Chain
- Tension System No Catenary Sag.
- Ideal for Aggressive Environments
- Higher Loads and Higher Speeds vs. All Plastic Construction
- Straight Running and Side Flexing available

Speed	0-400 fpm
Running Surface	Plastic
Width (mm)	32, 35, 82, 114, 152, 190mm
Width (in)	1.25," 1.375" 3.25," 4.5," 6," 7.5"
Length (mm)	914-15,240mm
Length (in)	3-50 ft
Variable Speed	YES
Voltages	115/1/60 230/1/60 230/3/60 460/3/60 575/3/60
Accumulation	YES
Gripper Fingers	YES

TWO-PIECE STEEL CHAINS



A DODGE COMPANY

Automation
Robhead FERGUSON
CAMCO

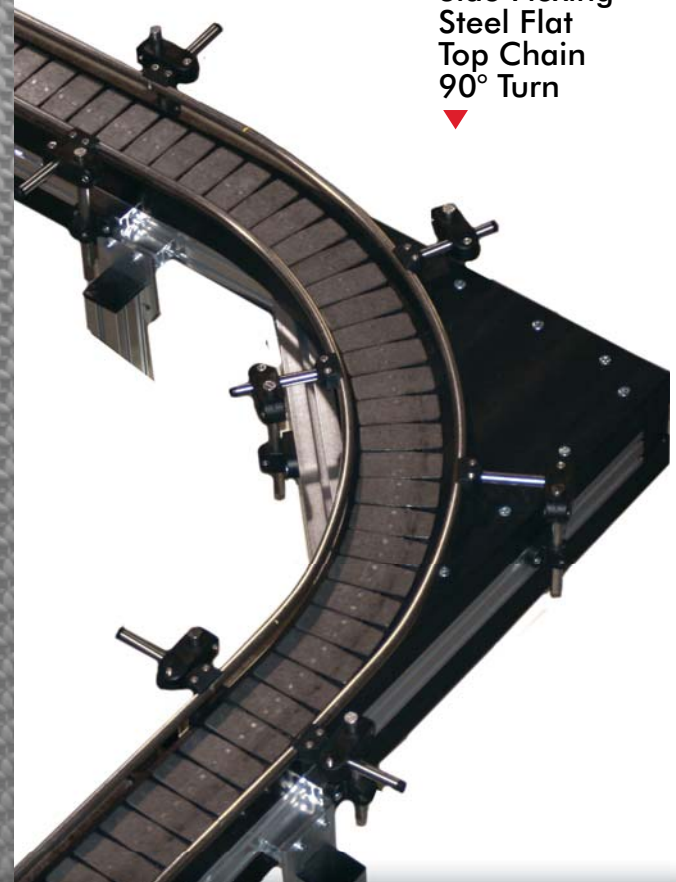
Two-Piece Plastic Chain- Offset Head Drive

- Sprocket Driven Roller Chain
- Tension System No Catenary Sag.
- Ideal for Aggressive Environments
- Higher Loads and Higher Speeds vs. All Plastic Construction
- Straight Running and Side Flexing available

Speed	0-400 fpm
Running Surface	Steel or Stainless Steel
Width (mm)	32, 35, 82, 114, 152, 190mm
Width (in)	1.25," 1.375" 3.25," 4.5," 6," 7.5"
Length (mm)	914-15,240mm
Length (in)	3-50 ft
Variable Speed	YES
Voltages	115/1/60 230/1/60 230/3/60 460/3/60 575/3/60
Accumulation	YES
Gripper Fingers	YES



◀ Straight Running
Steel Flat Top Chain



Side Flexing
Steel Flat
Top Chain
90° Turn
▼



A BOWEN COMPANY

Automation
Rebehead FERROUSON
CAMCO

SPECIALTY CONVEYORS



Dual Lane
Vacuum Belt
Conveyor ▶

Vacuum

- Flat Belt Low Profile
- Multiple Lane
- Timing Belt

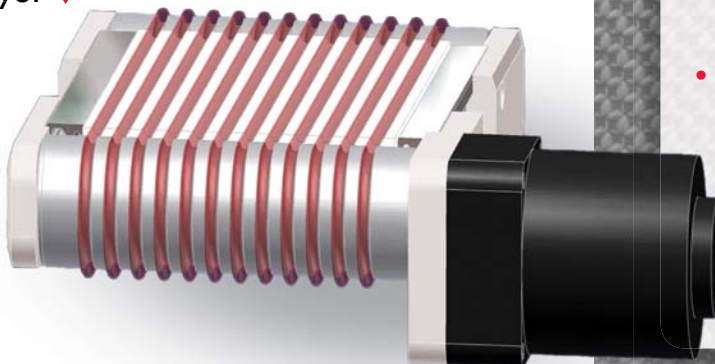


Dual Lane
Magnetic
Belt Conveyor ▶

Magnetic

- Flat Belt Low Profile
- Multiple Lane
- Timing Belt

Multi-Lane
O-Ring Belt
Conveyor ▼



O-Ring Belt

- Open Frame Design
- Good for Point Contact Part Transporting
- Lighter Loads and Shorter Distances

TRAY HANDLING SYSTEMS



A DIVISION COMPANY

Automation
Robohand FERGUSON
CAMCO

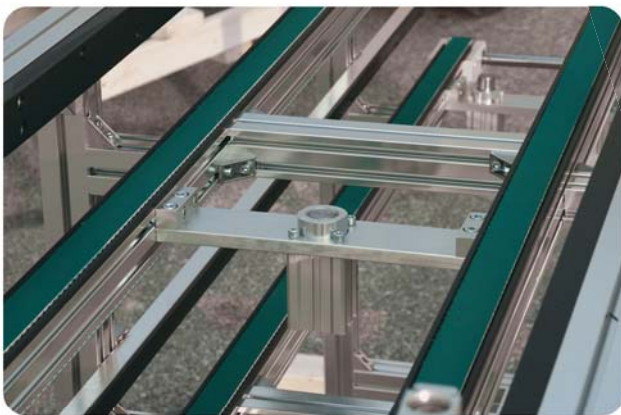
Tray Handling Systems

- Timing Belt or Roller Chain Driven
- Width and Length Selectable
- Electric or Pneumatic Elevators
- Stops and Locates as Required
- Customized to Customer's Tray

Tray-System with Pneumatic Elevator ▶



Single Tray Stop ▼



▲ Pneumatic Elevator for Over/Under Conveyor

◀ Dual Stops for Tray with Pneumatic Locating Pin

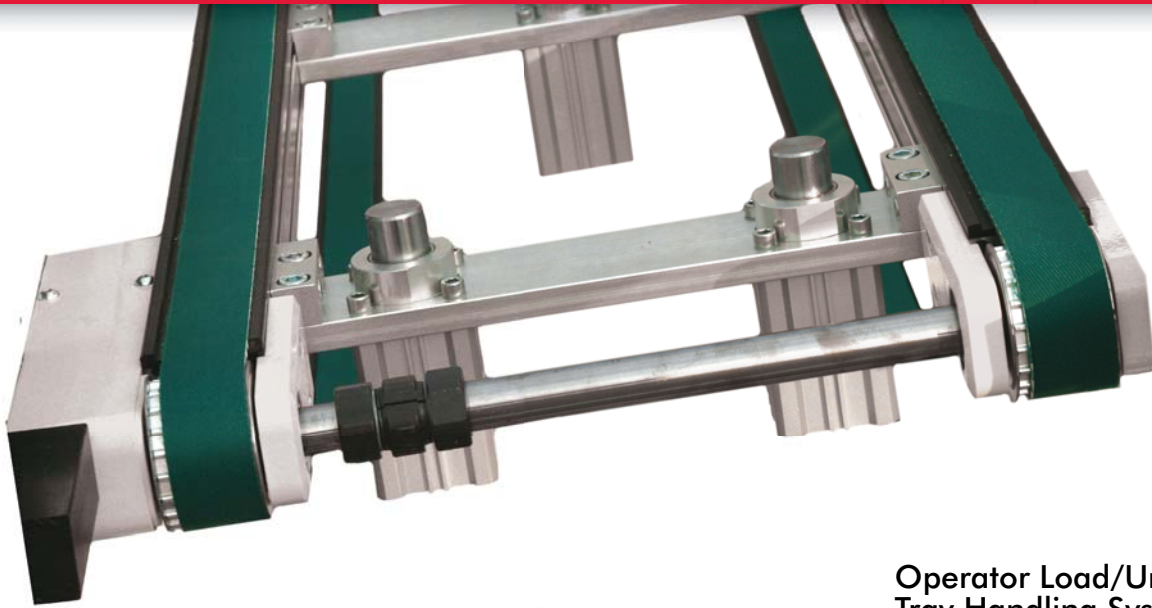




ROBERTSON COMPANY

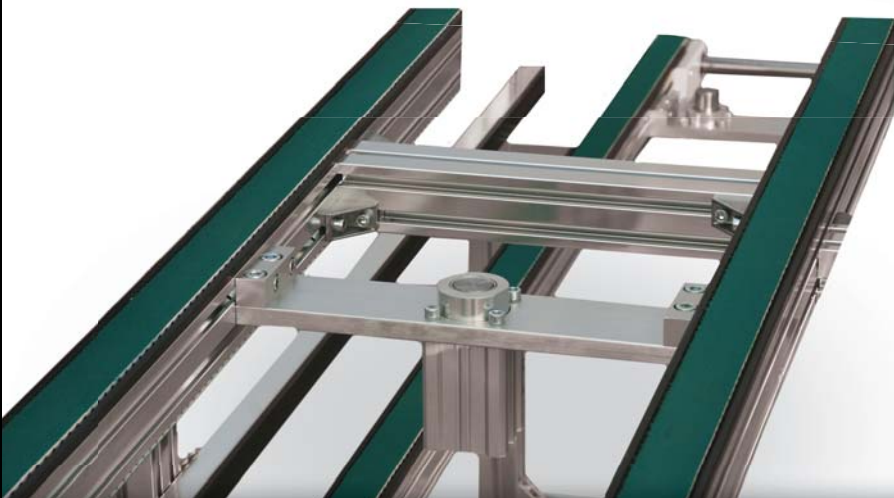
Automation
Robbhead FERROUS
CAMCO

TRAY HANDLING SYSTEMS



◀ Dual Stop Tray

Operator Load/Unload
Tray Handling Systems
▼



CONTROLLERS



A DODGE COMPANY

Automation
Robbend FERGUSON
CAMCO



Variable Speed Controllers

- Nema-12 Box or Kit for you to Mount in your own Control Cabinet
- External Potentiometer or Internal on Controller
- Inhibit Circuit to Turn On and Off
- Quick Disconnect from Motor to Control Cord
- 6 ft long Control and Power Cord



◀ Quick Disconnect Plug

Speed	6" W x 8" H x 3.5" D
Rating	Nema-12
Voltages (Input)	115/1/60 230/1/60
Safety Standards	UL, CE, CSA, EN
Frequency	50hz/60Hz

Inverter Duty Controllers

- Standard Models AB Powerflex 4 & 40
- Additional Manufacturers and Models upon Request
- Feature 115/1 or 230/1 Input for 3 Phase Motor Control
- Standard Cabinet Control Mount Nema-1, Optional Stand Alone Nema-1 Box



▲ ES01 Controller

Rating	Nema-12
Voltages (Input)	115/1/60 230/1/60 230/3/60 430/3/60 600/3/60
Safety Standards	UL, CE, CSA

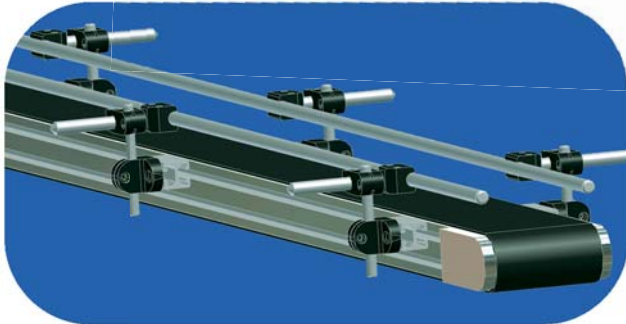


ROBERTSON COMPANY

Automation
Robbeind FERROUSON
CAMCO

CONVEYOR SIDE RAILS

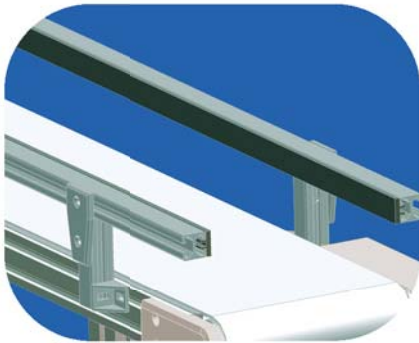
◀ 24mm Side Rails with UHMW



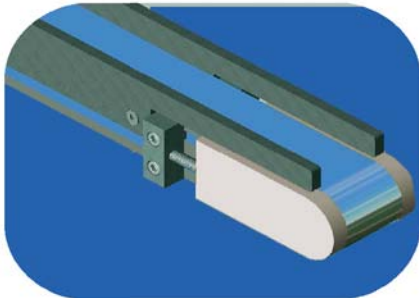
◀ 1/2" Round Rod Adjustable

Side Rails

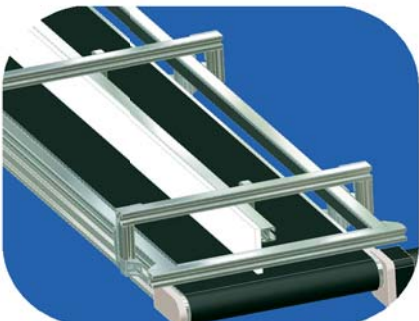
- 24 mm with UHMW Backing Fixed or Adjustable
- 48 mm with UHMW Backing Fixed or Adjustable
- 1/2" Round Rod
- Heavy Duty Steel Fixed
- Stainless Steel Fixed and Adjustable



◀ 24mm with UHMW Adjustable



◀ Heavy Duty Steel Fixed



◀ Fixed Side Rails with Transfer Chute



◀ Fixed Side Rails with Transfer Chute

1/2" Round Rod Adjustable ▶



CONVEYOR STANDS



A DODGE COMPANY

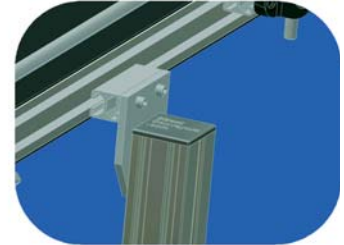
Automation
Robohand FERGUSON
CAMCO



◀ Height Adjustable Stands



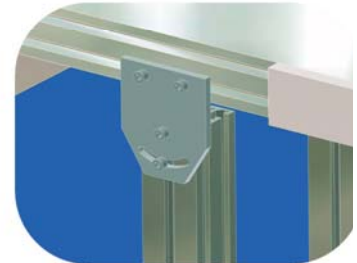
Offset Mount ▶
for Pans



Conveyor Stands

- H-Style Stands Fixed or Adjustable
- Leveling Feet (Lag Down)
- Casters (Fixed or Swivel & Lock)
- Incline or Horizontal Mounting
- Lower Cross Bracing Included
- Designed to Meet Your Requirements

Angle ▶
Adjustment
Plate



Leveling ▶
Feet



◀ H-Style Legs
Offset for
Drip Pans



Casters ▶
Fixed/
Swivel





A BOWEN COMPANY

Automation
Robbhead FERROUS
CAMCO

CONVEYOR ACCESSORIES



▲ Transfer Chute



▲ Drip Pans



▲ Divider Rail



▲ Hopper Chute



▲ Single Tray Stop

Conveyor Accessories

Drip Pans

- 18 Gauge CRS Steel or Stainless Steel Drip Pans with Drain Connection
- Easily Removable Design for Cleaning and Maintenance Drip Pans

Special Chutes and Rails

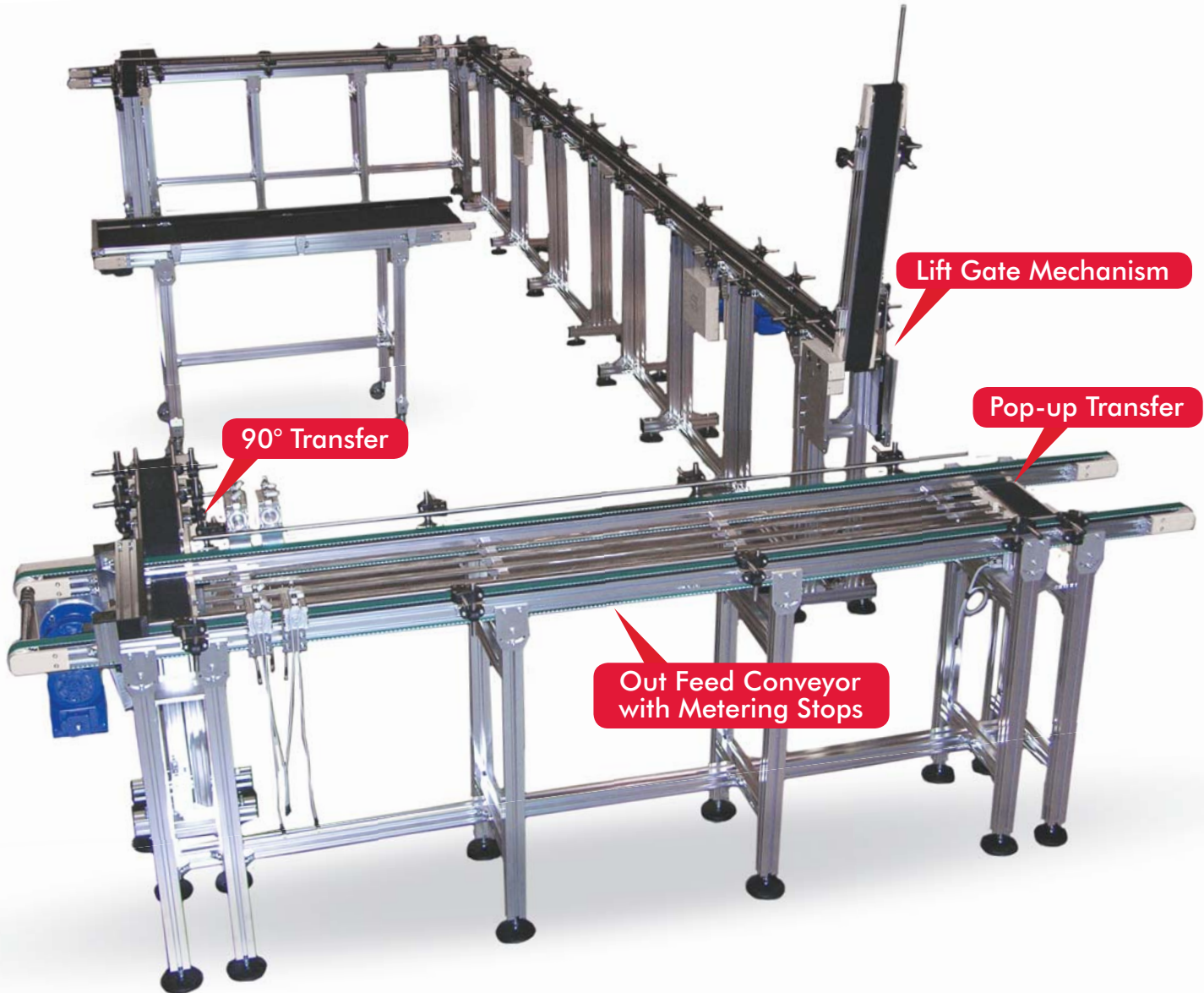
- Entrance and Exit Chutes Designed for your Application
- Transfer Chutes from Conveyor to Conveyor
- Divider Rails per Application
- Entrance Hoppers
- End Stops and Metering Stops

MODIFIED STANDARDS



A BUCKEY COMPANY

Automation
Robohand FERGUSON
CAMCO





ROBERTSON COMPANY

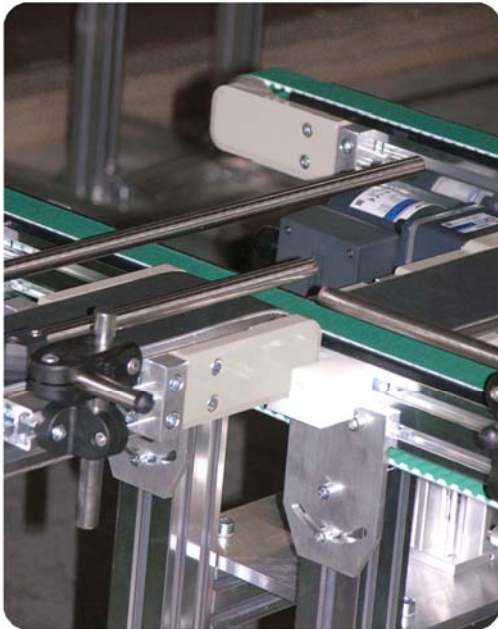
Automation
Robbhead FERROUS
CAMCO

MODIFIED STANDARDS

Metering Stops
with Pop-up
Transfer Conveyor



90° Transfer ▶



◀ Lift Gate Stop



▲ Pop-up Transfer
Conveyor

CONVEYOR APPLICATION REQUEST FORM



A DODGE COMPANY

Automation
Robohand FERGUSON
CAMCO

DATE: _____
CONTACT NAME: _____
COMPANY: _____
ADDRESS: _____

PHONE: _____
FAX: _____
E-MAIL: _____
REP: _____

APPLICATION INFORMATION

ENVIRONMENT: _____
PART MATERIAL: _____
PART DIMENSIONS: LENGTH: _____
WIDTH: _____
HEIGHT: _____

CONVEYOR INFO

TYPE-BELT, ROLLER, CHAIN, PLASTIC, _____
TIMING, MAGNETIC, VACUUM _____
TRANSFER NOSE REQUIRED: _____
CONVEYOR LENGTH: _____ FT/MM
CONVEYOR WIDTH: _____ IN/MM
DRIVE TYPE: CENTER END DIRECT SIDE
MAX. LOAD: _____ LB
CONVEYOR MODE: ACCUMULATING CONVEYING START/STOP BELT PREFERENCE: _____

ELECTRICAL INFO

MAX. SPEED: _____ FT/MIN PHASE: SINGLE 3 PHASE
MIN. SPEED: _____ FT/MIN SPEED: VARIABLE FIXED
INPUT VOLTAGE: 115 VAC 230 VAC
 460 VAC 575 VAC

SIDE RAILS

SIDE RAIL TYPE: FIXED ADJUSTABLE SIDE RAIL INFO: _____

STANDS

FIXED ADJUSTABLE

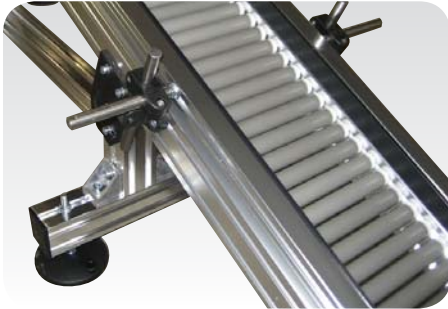
STAND HEIGHT: _____
STAND INFO: _____
COMMENTS: _____

DRAWING APPLICATION:



Automation
 Behlendorf FERROUSON
 CAMCO

CONVEYOR APPLICATIONS



Gravity Roller Inclined



Optional Explosion Proof Motor



Adjustable Height Stands



Gravity Roller Inclined



Vacuum Belt



Stainless Steel Mesh



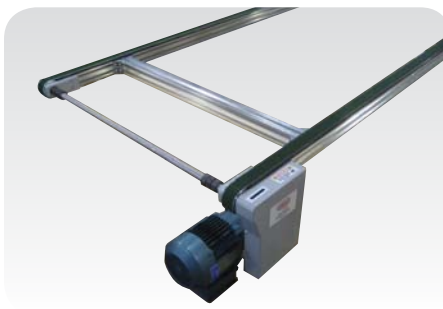
Center Drive



Dual Lane Magnetic Conveyor



Dual Lane, Inverted, Magnetic Conveyor



Dual Lane Timing Belt



A DOVER COMPANY

PRECISELY POSITIONING OUR CUSTOMERS FOR PRODUCTIVITY.

Workholding

- Widest variety of workholding products
- High durability and reliability
- Flexible solutions for all applications
- Custom products for unique requirements

Automation

- Broad range of engineered automation products
- Complementary products for modular integration
- Unmatched accuracy, reliability and performance
- Unparalleled global sales, service and engineering support

DE-STA-CO GLOBAL LOCATIONS

NORTH AMERICA

DE-STA-CO Headquarters
 Auburn Hills, Michigan
 Tel: 1.248.836.6700
 Toll Free: 1.888.DESTACO
 Marketing: marketing@destaco.com
 Customer Service: customerservice@destaco.com

Charlevoix, Michigan
 Tel: 1.888.DESTACO
 Customer Service: customerservice@destaco.com

Wheeling, Illinois
 Tel: 1.800.645.5207
 Customer Service: camco@destaco.com

Red Wing, MN (Central Research Laboratories)
 Tel: 651.385.2142
 Customer Service: sales@centres.com

SOUTH AMERICA

Brazil
 Tel: 0800-124070
 Customer Service: samerica@destaco.com

ASIA

Thailand
 Tel: +66-2-326-0812
 Customer Service: info@destaco.com

China
 Tel: +86-21-6081-2888
 Customer Service: china@destaco.com

India
 Tel: +91 80 41123421-426
 Customer Service: india@destaco.com

EUROPE

Germany
 Tel: +49-6171-705-0
 Customer Service: europa@destaco.com

France
 Tel: +33-1-3996-5000
 Customer Service: france@destaco.com

UK
 Tel: +44-1902-797980
 Customer Service: uk@destaco.com

Spain
 Tel: +34-936361680
 Customer Service: spain@destaco.com

Netherlands
 Tel: +31-297285332
 Customer Service: benelux@destaco.com



A DOVER COMPANY

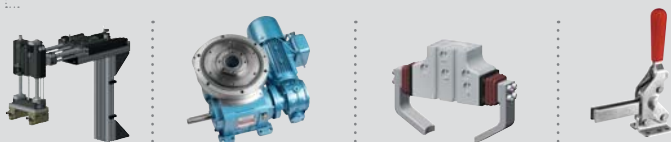
Automation

Robohand FERGUSON

CAMCO

1025 Doris Road
 Auburn Hills, MI 48326
 Phone: 1.888.DESTACO
 Fax: 1.248.836.6901

Email: tech-automation@destaco.com
 Web: www.destaco.com



Precisely positioning our customers for productivity.

© Copyright, 2009 DE-STA-CO. All rights for layout, photos and text rest with the publisher DE-STA-CO. All photomechanical or other reproductions only with our express permission. All sales are based on our terms and conditions of sale, delivery and payment.

SOTAD:CONVEYORS:0909 Qty: 2.5K